

Performance report



**Families
First**

Early help, brighter futures

**Hertfordshire with
Dacorum & St.
Albans' wards
January – December 2024**

www.hertfordshirefamiliesfirst.org.uk

Families First – assessment numbers



Family First Assessments (FFAs) are used to identify support for families who agree to multi-agency early help.



The number of FFAs finalised in the 12 months to the end of December 2024 was 701, which included 1,698 children. 28.2% of children supported are non-White British (the 2021 census population figure was 28.2%). 16% of children had an EHCP and 16.5% had a SEND support status.



Intensive Family Support teams (420), schools (93) and school partnerships (75) led on the majority of FFAs.



Between January 2024 and December 2024, 1,428 children were supported using 'short term work' interventions.

Presenting needs and outcomes



81% of FFAs include at least one child / young person member of the family with a health need and 80% identified an adult with a health need. 79% identify a need against the Family Relationships criteria and 73% of FFAs include concerns relating to education.



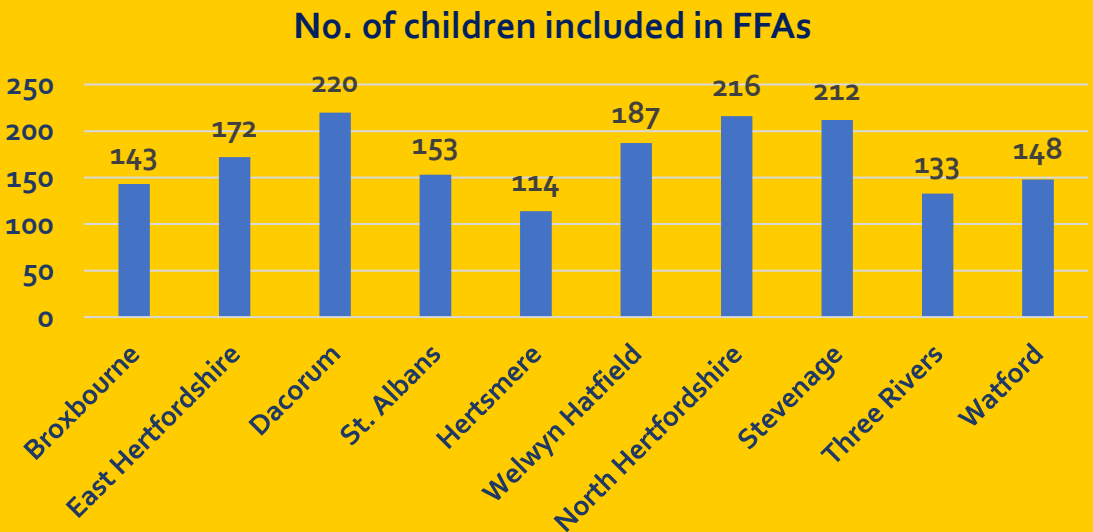
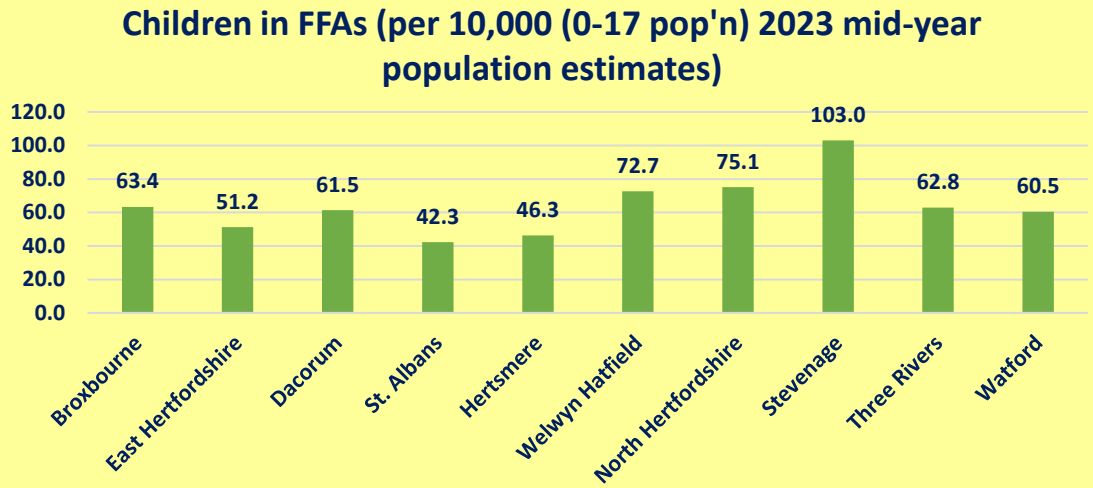
The outcome success rate following the completion of FFAs for the period between January 2024 and December 2024 was 75%. 10% of families disengaged or withdrew consent; however, it is often found that much has been achieved prior to disengagement. 15% of FFAs result in cases transferred to LCS for support from Specialist & Safeguarding Services.

Families First Assessments (Jan. 2024 – Dec. 2024)



No. of children in completed FFAs

<i>District</i>	No. Children	Children per 10,000 (2023 Mid Year Estimates)
Broxbourne	143	63.4
East Hertfordshire	172	51.2
Dacorum	220	61.5
St. Albans	153	42.3
Hertsmere	114	46.3
Welwyn Hatfield	187	72.7
North Hertfordshire	216	75.1
Stevenage	212	103
Three Rivers	133	62.8
Watford	148	60.5
Hertfordshire	1,698	62.1



Families First Assessments (FFA) finalised

By lead agency and District / Borough



	Carers in Hertfordshire	CHEXS	Early Years' setting	Family Support Service	FF Panels / SFPT	Homelessness Prevention Team	Intensive Family Support	School / ESC	School Partnership	TOTAL
Broxbourne	1	4	1	7	4	4	38	8		67
East Hertfordshire				4	6		44	20		74
Dacorum	1			1	11	1	47	6	29	96
St. Albans			1	4	6	1	20	7	22	61
Hertsmere	1			5	2		38	2	4	52
Welwyn Hatfield				5		1	56	11	3	76
North Hertfordshire				11	7	1	42	21	5	87
Stevenage	1			5	2	4	46	11	5	74
Three Rivers				2	2	2	42	3	3	54
Watford					2	3	47	4	4	60
TOTAL	4	4	2	44	42	17	420	93	75	701

Families First Assessments (FFA) finalised

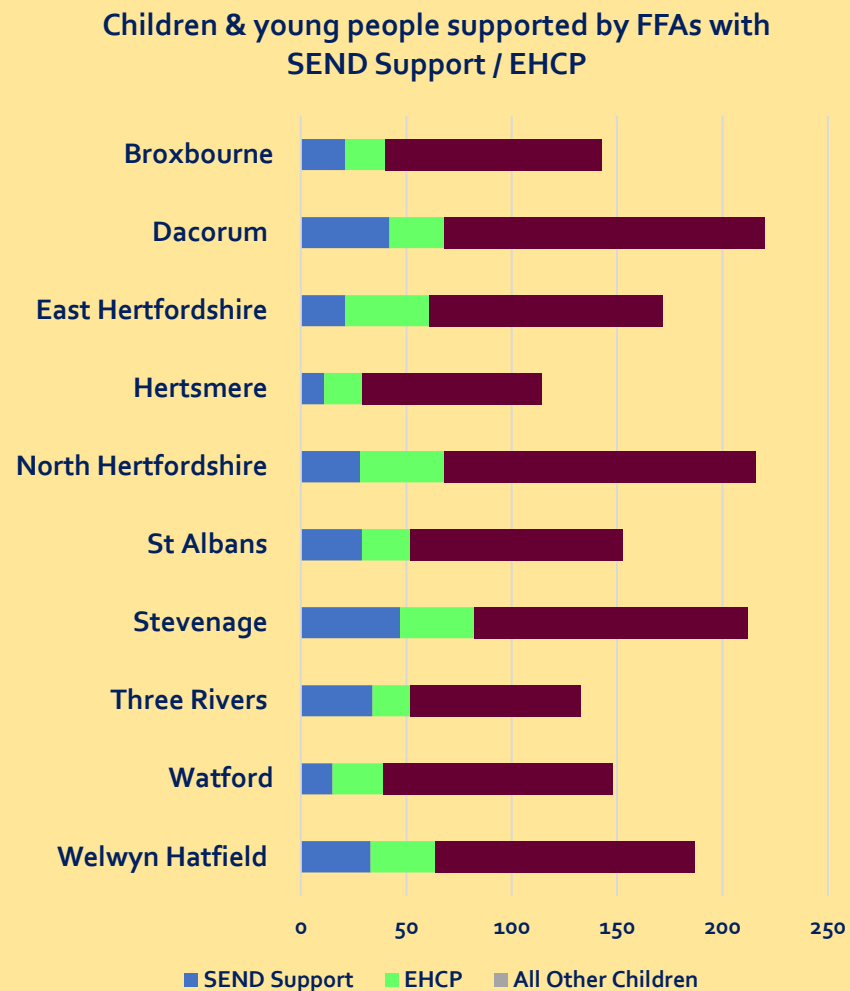
By Quarter & District / Borough



	Oct - Dec 2023	Jan - March 2024	Apr - June 2024	July - Sept 2024	Oct - Dec 2024	<i>Total</i>
Broxbourne	13	21	11	13	22	80
East Hertfordshire	24	18	21	11	24	98
Dacorum	33	29	27	18	22	129
St. Albans	24	19	14	18	10	85
Hertsmere	13	23	7	9	13	65
Welwyn Hatfield	23	24	17	12	23	99
North Hertfordshire	25	31	18	24	14	112
Stevenage	24	26	22	11	15	98
Three Rivers	13	10	17	7	20	67
Watford	11	18	17	17	8	71
TOTAL	203	219	171	140	171	904

FFA – SEND SUPPORT & EHCP needs: January 2024 - December 2024

	SEND Support	EHCP	All Other Children	Total	SEND Support %	EHCP %	EHCP / SEND Support %
Broxbourne	21	19	103	143	14.7	13.3	28.0
East Hertfordshire	21	40	111	172	12.2	23.3	35.5
Dacorum	42	26	152	220	19.1	11.8	30.9
St Albans	29	23	101	153	19.0	15.0	34.0
Hertsmere	11	18	85	114	9.6	15.8	25.4
Welwyn Hatfield	33	31	123	187	17.6	16.6	34.2
North Hertfordshire	28	40	148	216	13.0	18.5	31.5
Stevenage	47	35	130	212	22.2	16.5	38.7
Three Rivers	34	18	81	133	25.6	13.5	39.1
Watford	15	24	109	148	10.1	16.2	26.4
Hertfordshire	281	274	1143	1698	16.5	16	32.7



Families First Assessments (FFA) finalised

By children's ethnicity & District / Borough



	Asian or Asian British - Bangladeshi	Asian or Asian British - Indian	Asian or Asian British - Pakistani	Any Other Asian Background	Black or Black British - African	Black or Black British - Caribbean	Any Other Black Background	Mixed White and Asian	Mixed White and Black African	Mixed White and Black Caribbean	Any Other Mixed Background	White - British	Any Other White Background	White - Irish	Traveller of Irish Heritage or Gypsy / Roma	Any Other Ethnic Group	Not stated	Total
Broxbourne			4	3	10	4	2	1	1	9	6	91	5				7	143
East Hertfordshire		2			10	3		1		5	2	131	8	2			8	172
Dacorum		1	6	4	2	1	2	7	6	6	10	159	6				10	220
St Albans	7			1	7			9	6	3	8	94	12			3	3	153
Hertsmere		5	3	3	5		1	1		3	3	70	3		3	7	7	114
Welwyn Hatfield				2	7		2	1	6	12	8	129	10		1	1	8	187
North Hertfordshire				1				4	5	9	6	176	2				13	216
Stevenage					10		1	2	1	1	2	186	3		4		2	212
Three Rivers		2						4			2	111	9	4			1	133
Watford			15	9	9	6	1	5	1	13	2	72	8		1	3	3	148
Hertfordshire	7	10	28	23	60	14	9	35	26	61	49	1,219	66	6	9	14	62	1,698
% Total (Herts)	0.4	0.6	1.6	1.4	3.5	0.8	0.5	2.1	1.5	3.6	2.9	71.8	3.9	0.4	0.5	0.8	3.7	
2021 census (Herts)	0.6	4.1	1.5	2.5	2.4	1.3	0.1	1.2	0.5	1.1	1.1	71.8	8.1	1.6	0.3	0.1		

Presenting needs % (family level) in completed FFAs



FFAs completed – 12 months to December 2024

DISTRICT	Getting a good education	Early Years Development	Mental & Physical Health (Child / Young Person)	Mental & Physical Health (Adult)	Substance Misuse	Family Relationships / Parenting capacity	Crime & ASB	Domestic Abuse	Housing	Financial issues	Children keeping safe / risk of exploitation	Young Carers	Number of families
Broxbourne	61.2	26.9	74.6	91.0	28.4	76.1	16.4	53.7	44.8	47.8	29.9	16.4	67
East Hertfordshire	79.7	28.4	89.2	89.2	23.0	81.1	12.2	58.1	39.2	58.1	36.5	27.0	74
Dacorum	79.2	13.5	79.2	80.2	19.8	62.5	7.3	45.8	32.3	34.4	27.1	18.8	96
St. Albans	75.4	24.6	91.8	73.8	16.4	67.2	6.6	34.4	31.1	42.6	16.4	16.4	61
Hertsmere	65.4	17.3	73.1	71.2	11.5	82.7	1.9	38.5	38.5	44.2	19.2	13.5	52
Welwyn Hatfield	75.0	14.5	75.0	76.3	15.8	78.9	5.3	46.1	28.9	32.9	28.9	11.8	76
North Hertfordshire	73.6	20.7	83.9	77.0	23.0	83.9	4.6	49.4	29.9	51.7	26.4	24.1	87
Stevenage	74.3	21.6	82.4	85.1	21.6	83.8	8.1	44.6	40.5	40.5	40.5	21.6	74
Three Rivers	74.1	24.1	74.1	74.1	11.1	81.5	1.9	33.3	20.4	38.9	22.2	13.0	54
Watford	68.3	13.3	80.0	73.3	20.0	80.0	8.3	35.0	33.3	41.7	26.7	16.7	60
TOTAL	73.2	20.3	80.6	79.6	19.5	78.6	7.4	44.8	34.0	43.2	28.0	18.4	701

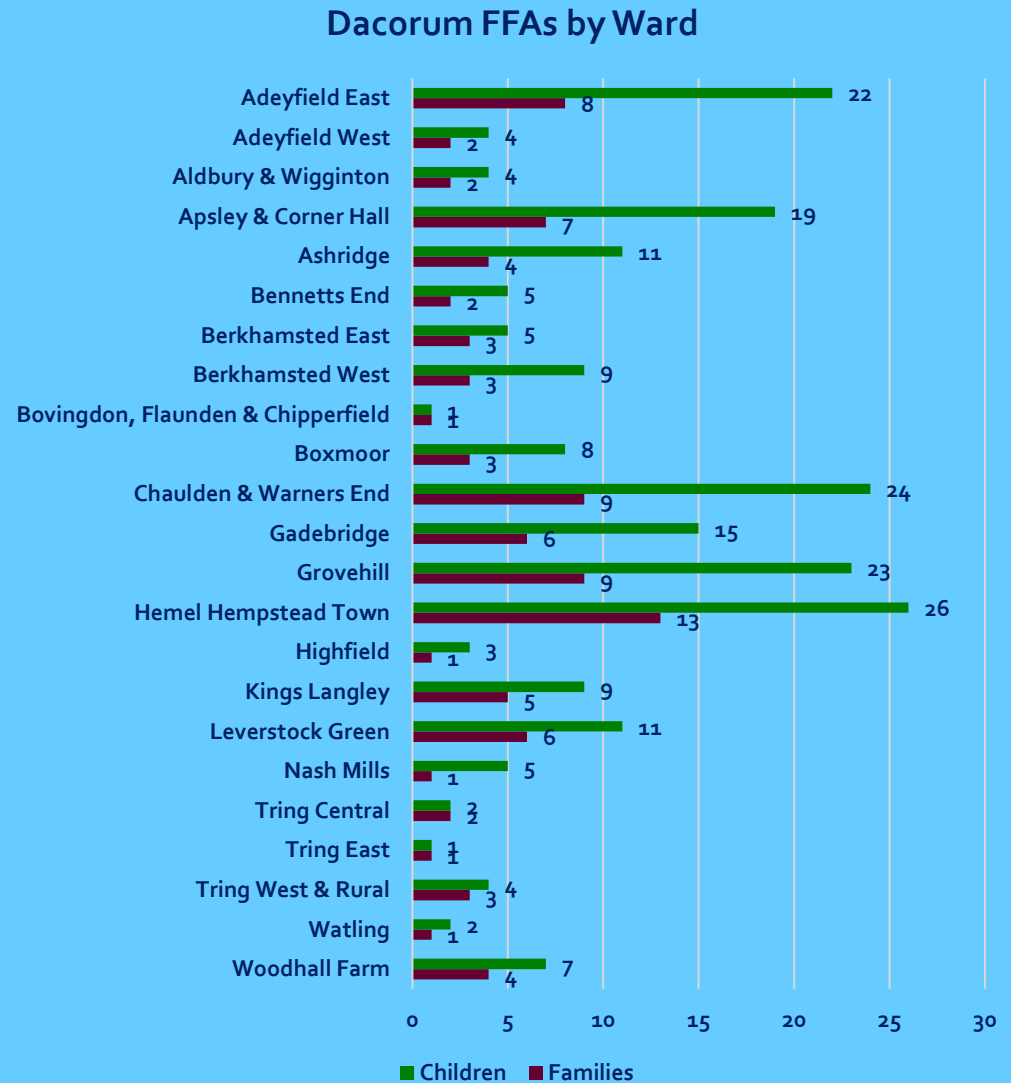
FFA – completed assessments

January 2024 - December 2024



Dacorum by Ward

	Families	Children
Adeyfield East	8	22
Adeyfield West	2	4
Aldbury & Wigginton	2	4
Apsley & Corner Hall	7	19
Ashridge	4	11
Bennetts End	2	5
Berkhamsted East	3	5
Berkhamsted West	3	9
Bovingdon, Flaunden & Chipperfield	1	1
Boxmoor	3	8
Chaulden & Warners End	9	24
Gadebridge	6	15
Grovehill	9	23
Hemel Hempstead Town	13	26
Highfield	1	3
Kings Langley	5	9
Leverstock Green	6	11
Nash Mills	1	5
Tring Central	2	2
Tring East	1	1
Tring West & Rural	3	4
Watling	1	2
Woodhall Farm	4	7



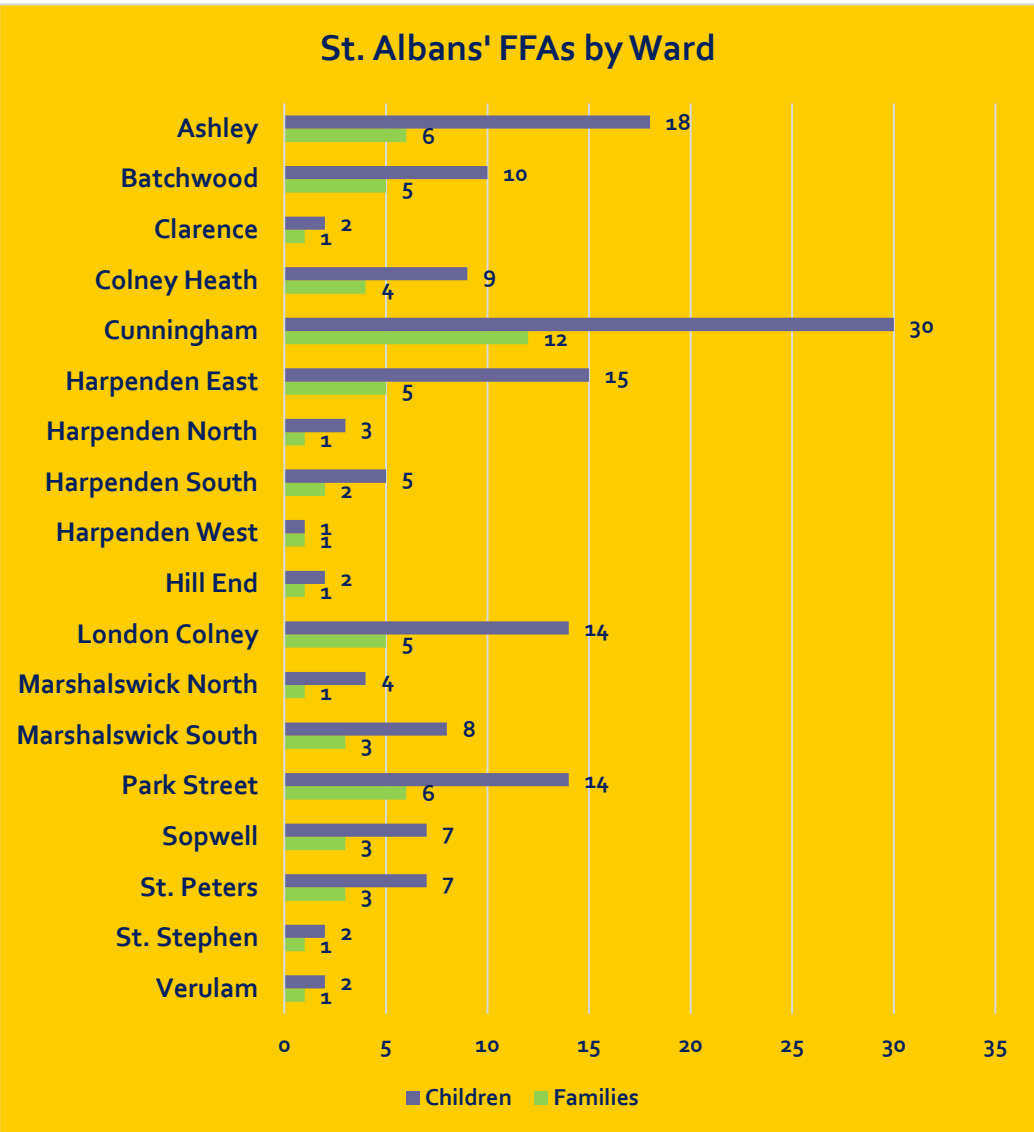
FFA – completed assessments

January 2024 – December 2024



St. Albans by Ward

	Families	Children
Ashley	6	18
Batchwood	5	10
Clarence	1	2
Colney Heath	4	9
Cunningham	12	30
Harpenden East	5	15
Harpenden North	1	3
Harpenden South	2	5
Harpenden West	1	1
Hill End	1	2
London Colney	5	14
Marshalswick North	1	4
Marshalswick South	3	8
Park Street	6	14
Sopwell	3	7
St. Peters	3	7
St. Stephen	1	2
Verulam	1	2



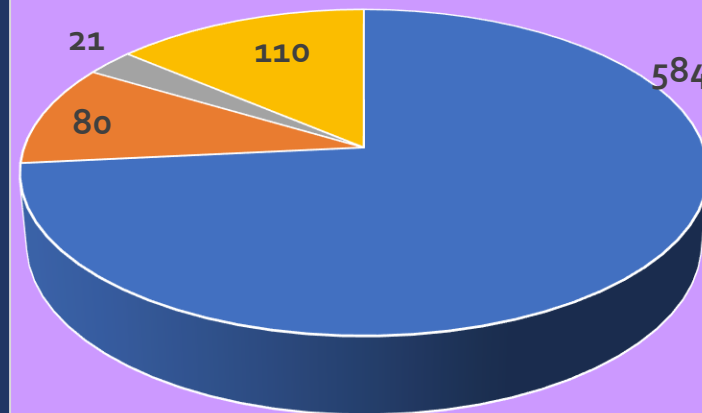
FFA closure/outcome: January – December 2024

By District



DISTRICT	Successful outcome(s)	Disengaged / consent withdrawn	Moved away from county	Moved across to Specialist & Safeguarding	TOTAL	% success
Broxbourne	49	8	2	8	67	75%
East Hertfordshire	49	5	2	10	66	77%
Dacorum	89	11	2	18	120	75%
St. Albans	73	4	5	15	97	79%
Hertsmere	41	5	3	10	59	73%
Welwyn Hatfield	55	8	2	19	84	67%
North Hertfordshire	74	11	1	15	101	74%
Stevenage	69	11	1	5	86	81%
Three Rivers	47	8	1	3	59	81%
Watford	38	9	2	7	56	70%
TOTAL	584	80	21	110	795	75%

FFA closure outcomes



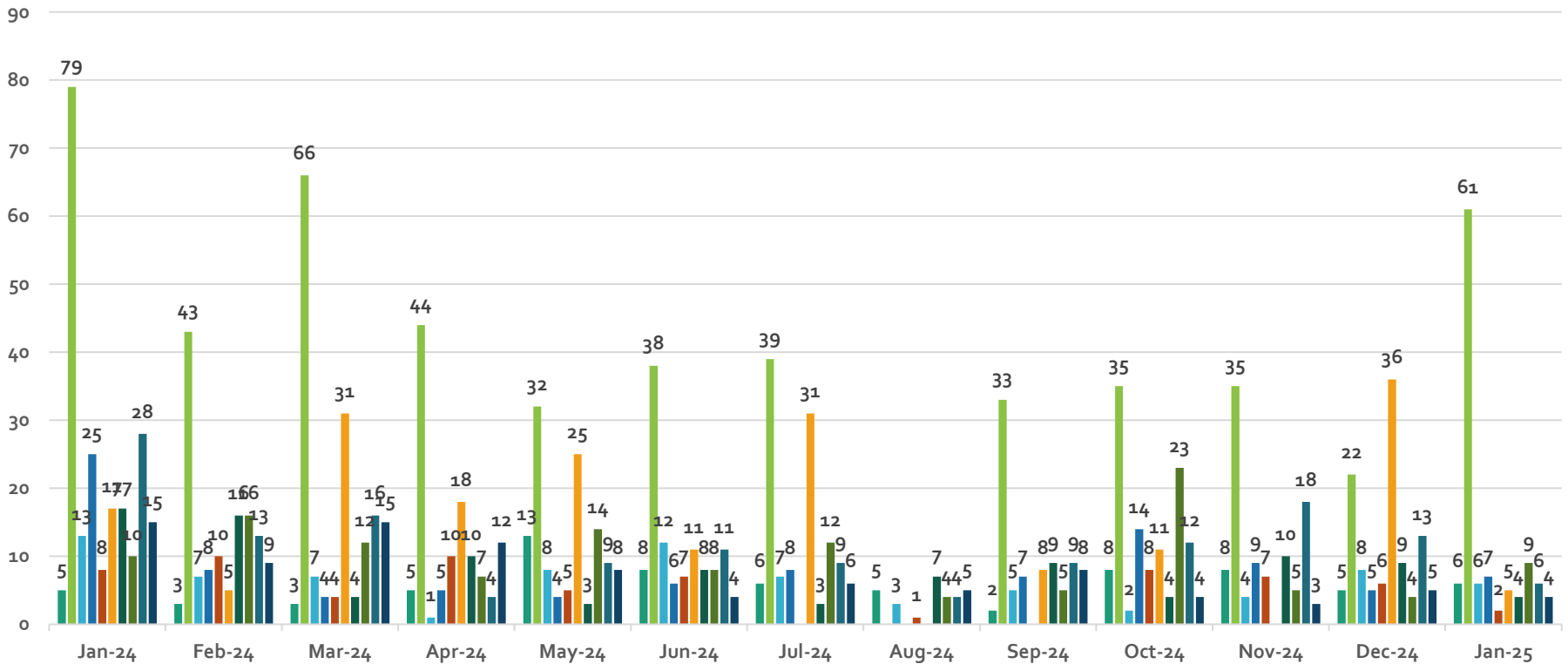
- Successful outcome(s)
- Disengaged / consent withdrawn
- Moved away from county
- Moved across to Specialist & Safeguarding

Short Term Work: January 2024 – January 2025 (exc. cancelled forms)

Children & young People by District / Borough



Short Term Work - Children & Young People by month (start date)



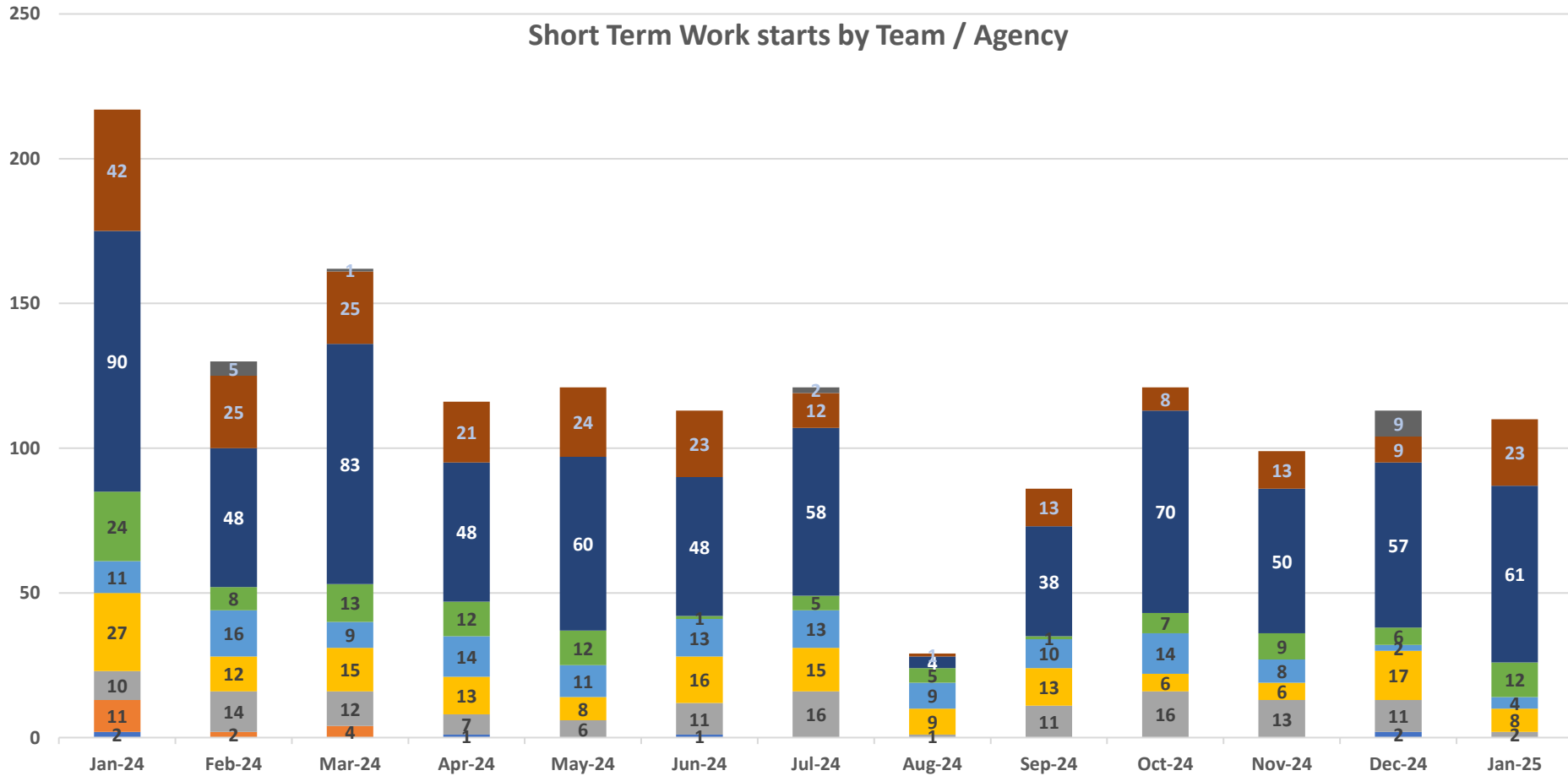
■ Broxbourne ■ Dacorum ■ East Hertfordshire ■ Hertsmere ■ North Hertfordshire ■ St. Albans ■ Stevenage ■ Three Rivers ■ Watford ■ Welwyn Hatfield

Short Term Work January 2024 – January 2025 (exc. cancelled forms)

Children & young People by lead agency



Short Term Work starts by Team / Agency



■ Carers in Hertfordshire
■ Family Support Service
■ LSP / School / DSPL

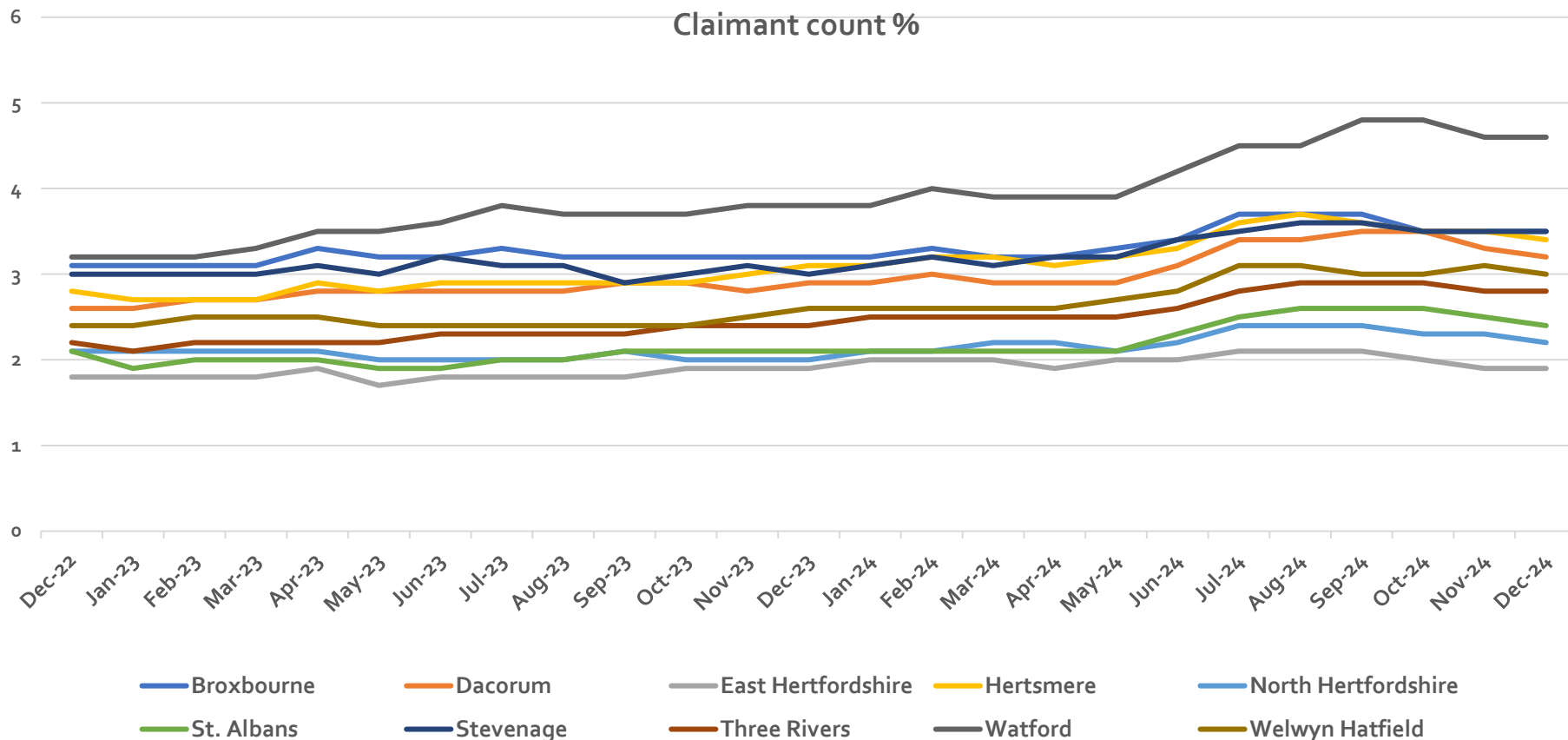
■ Children's Wellbeing Team
■ IFST
■ SFYP

■ FF Panels
■ Homelessness Prevention Team
■ Supporting Families Practice Team

Claimant count % (not seasonally adjusted)

By District – Dec. 2022 – Dec. 2024

(county increase from 2.5% to 3.0% between Dec. 2022 & Dec. 2024)



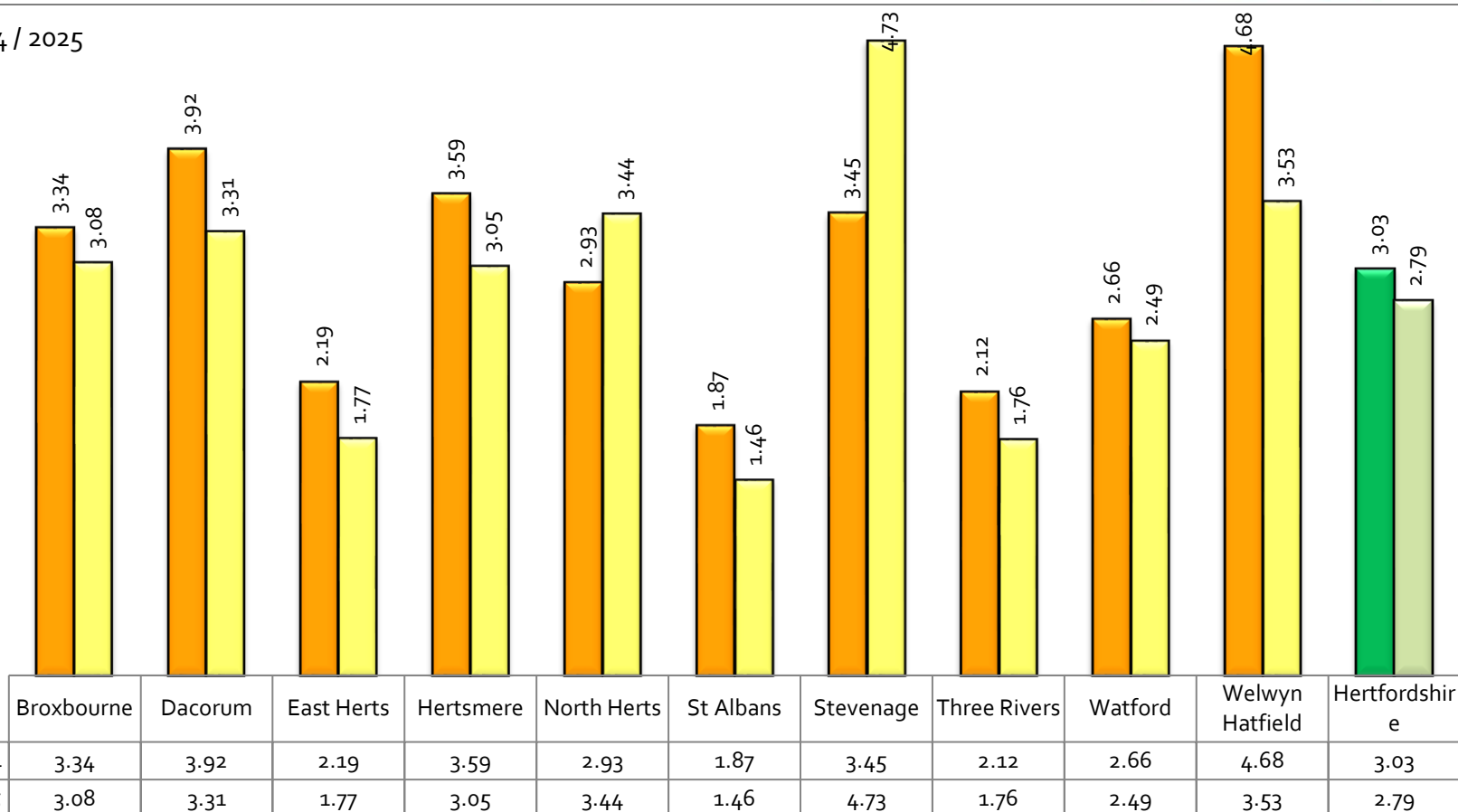
Watford has the highest claimant count rate, as of December 2024, at 4.6%; East Herts has the lowest rate at 1.9%. The Hertfordshire rate for 18-24 year olds is 4.1% (Dec. 2024); this was 3.3% in December 2022.

16-18 NEET (Years 12 & 13): January 2024 & January 2025

By District



NEET % - 2024 / 2025



In addition to the NEET rate reducing from 3.03% to 2.79% in the last 12 months, the in-learning rate has increased during the same period from 93.61% to 94.75%. The lost contact rate has fallen from 0.79% to 0.69% between January 2024 and January 2025.